

TUSCANITM
I T A L Y



USER INSTRUCTION MANUAL

TSC BELLONA 38(D)
TSC BELLONA 45
TSC BELLONA 45(SS)
TSC BELLONA 110
TSC BELLONA 166
TSC BELLONA 166(SS)

Thanks for buying our wine chiller, wish our advanced product will take care of your wine very well and you can have joyful taste. Before use, please read and follow all safety rules and operating instructions.

WARNING!

- To prevent damaging the door gasket, make sure to have the door all the way opened when pulling shelves out of the rail compartment.
- The appliance must be positioned such that the plug is accessible. Release the power cord. Move your appliance to its final location. Do not move your appliance while loaded with wine, you might distort the appliance body. The appliance should be installed in a suitable place where the compressor will not be subject to physical contact.
- This appliance is not intended for use by persons (including children) with reduced physical, sensory or mental capabilities, or lack of experience and knowledge, unless they have been given supervision or instruction concerning use of the appliance by a person responsible for their safety.
- Children should be supervised to ensure that they do not play with the appliance.

It is hazardous for anyone other than an Authorised Service Person to carry out servicing or repairs to this appliance.

- **WARNING:** Keep ventilation openings, in the appliance enclosure or in the built-in structure, clear of obstruction.
- **WARNING:** Do not use mechanical devices or other means to accelerate the defrosting process, other than those recommended by the manufacturer.
- **WARNING:** Do not damage the refrigerant circuit.
- **WARNING:** Do not use electrical appliances inside the food storage compartments of the appliance, unless they are of the type recommended by the manufacturer.
- **WARNING:** Do not store explosive substances such as aerosol cans with a flammable propellant in this appliance.
- **WARNING:** To avoid a hazard due to instability of the appliance, it must be fixed in accordance with the instructions.

To avoid contamination of wine, please respect the following instructions:

- Opening the door for long periods can cause a significant increase of the temperature in the compartments of the appliance.
- Clean regularly surfaces that can come in contact with bottles and accessible drainage systems.
- Clean water tanks if they have not been used for 48 hours; flush the water system connected to a water supply if water has not been drawn for 5 days.
- If the refrigerating appliance is left empty for long periods, switch off, defrost, clean, dry, and leave the door open to prevent mould developing within the appliance.

PLEASE DON'T TRY TO PLUG INTO OR EXTENSION THE CABLE IN ANY CASE.

IMPORTANT SAFETY INSTRUCTIONS

⚡WARNING⚡

To reduce the risk of fire, electrical shock, or injury when using your appliance, follow these basic precautions:

- Read all instructions before using the wine chiller.
- **DANGER or WARNING:** Risk of child entrapment. Child entrapment and suffocation are not problems of the past. Junked or abandoned appliances are still dangerous . . . even if they will “just sit in the garage a few days”.
- Before you dump away this appliance or your old wine chiller, you must take off the door, the door handle and the shelves away from the wine chiller and dispose these items separately.
- Never allow children to operate, play with, or crawl into this appliance.
- Never clean this appliance and its parts with flammable fluids as it may cause fire hazard or explosion.
- Do not store or use gasoline or any other flammable vapors and liquids in the vicinity of this appliance as it may cause fire hazard or explosion.
- Do not store explosive substances such as aerosol cans with a flammable propellant in this appliance.
- Do not store food in this appliance.
- **WARNING:** keep ventilation openings, in the appliance enclosure or in the built-in structure, clear of obstruction.
- Do not use mechanical devices or other means to accelerate the defrosting process, other than those recommended by the manufacturer.
- **WARNING:** To avoid a hazard due to instability of the appliance, it must be fixed in accordance with the instructions.
- **WARNING:** Do not damage the refrigerant circuit.
- **WARNING:** Do not use electrical appliances inside the food storage compartments of the appliance, unless they are the type recommended by the manufacturer.

If the refrigerant of these appliances are R600a, flammable and explosive articles should not be put in or near the appliance, to avoid the fire or explode caused.



-Save these instructions-

INSTALLATION INSTRUCTIONS

➤ **Before Using Your Wine Chiller**

- Remove the exterior and interior packing.
- Before connecting the wine chiller to the power source, let it stand upright for approximately 2 hours. This will reduce the possibility of a malfunction in the cooling system after the fluctuating transportation and installation phase.
- Clean the interior surface with lukewarm water and soft cloth.
- Install the handle on the left side of the door.
- When replace the illuminating lamp, please select the lamp which comply with the rated power input of lamp according to the rating label. Shut off the power supply before replacing the lamp.
- When disposing your appliance, please choose an authorized disposal site.

➤ **Installation of Your Wine Chiller**

- This appliance is designed to be for free standing installation or built-in (fully recessed).
- Place your wine chiller on solid ground or firm surface that is strong enough to support it when it is fully loaded. To level your wine chiller, adjust the front leveling legs at the bottom of the wine chiller.
- Locate the wine chiller away from direct sunlight and sources of heat (stove, heater, radiator, etc.). Direct sunlight may affect the acrylic coating and heat sources may increase electrical consumption. Extreme cold ambient temperatures may also cause the unit not to perform properly.
- Avoid locating the unit in moist areas.
- Plug the wine chiller into an exclusive, properly installed-grounded wall outlet. Do not under any circumstances cut or remove the third (ground) prong from the power cord. Any questions concerning power and/or grounding should be directed toward a certified electrician or an authorized service person.

Attention:

This wine chiller has been designed for freestanding or built-in installation. In every case, there must be adequate ventilation and access for service.

Freestanding installation:

A freestanding installation will allow you to install the wine chiller in almost any place you desire. You must follow the stated instructions for electrical requirements and leveling the wine chiller.

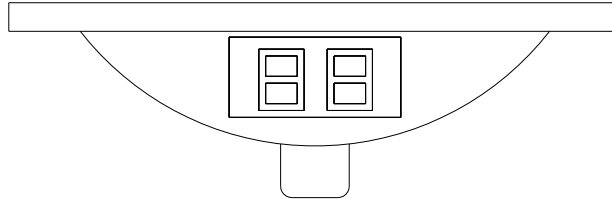
Built-in Installation:

When installing the wine chiller under a counter, to ensure proper service access and ventilation, allow between at least 5mm of clearance at the sides and top of the wine chiller, and at least 30-50mm of clearance at the back.

OPERATING YOUR WINE CHILLER

➤ The Controls of Your Wine Chiller

For TSC BELLONA 38(D)

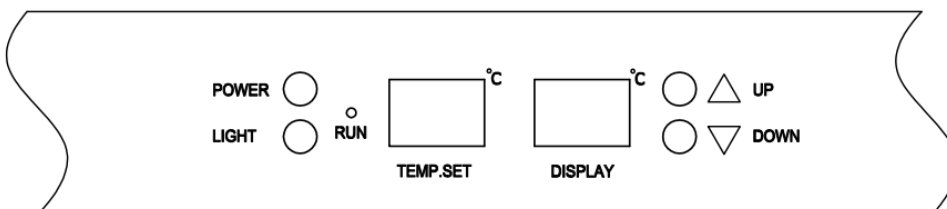


When power is connected and wine chiller is working normally the LED on the circuit board will flash, and the display will be show the actual temperature in appliance. The temperature setting can be adjusted from 5°C to 18°C.

The temperature adjustor. You press the temperature button, the temperature will be increase or reduce 1°C.

LED will flash when you setting temperature, when you stop the setting, LED will flash 5 seconds and then show the actual temperature.

For TSC BELLONA 45/ TSC BELLONA 45 (SS) /TSC BELLONA 110 / TSC BELLONA 166 / TSC BELLONA 166 (SS)



The temperature setting can be adjusted from 5°C to 18°C .

- **RUN**
Indicator light illuminates to signify the cooling mode is currently in operation.
- **LIGHT**
To control the inner light turn on/off.
 1. In order to reduce energy consumption, this appliance will automatically switch off the LED lights after 10 minutes.
 2. If you want the LED light to remain on continuously, this is possible. Please press and hold the "LIGHT" button for 5 seconds, the display will show "LP". After 4 seconds the display will revert back to normal and the light will remain on until manually switched off.
 3. If you want to revert back and conserve energy (recommended), please press and hold the "LIGHT" button for 5 seconds, the display will show "LF", after 4 seconds the display will revert back to normal, and the light will automatically switch off after 10 minutes.
- **POWER**
To control this appliance turn on/off. (press and hold this button for approximately 3

- seconds)
- **“UP” Button**
Used to raise (warm) the temperature in 1 °C.
- **“DOWN” Button**
Used to lower (cool) the temperature in 1 °C.
- **“DISPLAY”**
To shows the temperature of the internal appliance.
- **“TEMP.SET”**
To shows the setting temperature.

➤ **Setting the Temperature Control**

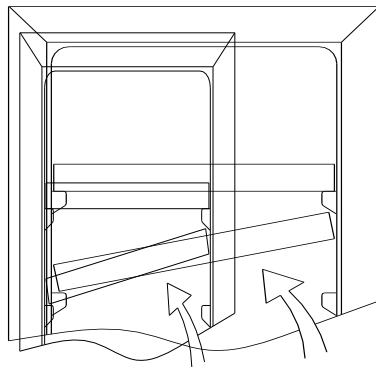
- To set the temperature:
Connect the power cord to a properly grounded outlet. In the event of a power interruption, all previous temperature settings are automatically erased and it will default to a preset temperature setting of 12 °C.
- Set the desired cooling temperature by pressing the buttons adjacent to the “UP/DOWN” program. Each depression of the buttons will scroll through the available temperature settings in increments of 1 degree. The temperature selected will flash in the LED display for approximately 5 seconds, then revert back to display the temperature of the internal appliance.

➤ **Attention**

- If the wine chiller is unplugged, power is lost, or turned off, wait 3 to 5 minutes before restarting the appliance. The wine chiller will not start if you attempt to restart before this time delay.
- When you use the wine chiller for the first time (or restart the wine chiller after having it shut off for a long time), there will be a few degrees, variance between the temperature you have selected and the one indicated on the LED readout. This is normal and it is due to the length of the activation time. Once the wine chiller is running for a few hours everything wil stabilize.

➤ **How to remove the shelf**

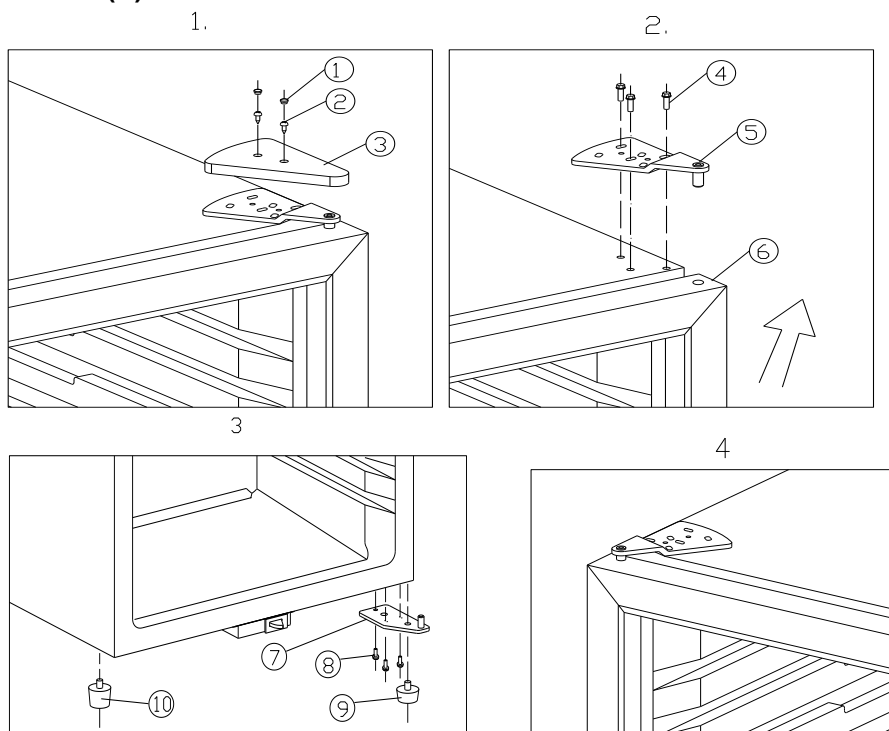
- To prevent damaging the door gasket, make sure to have the door all the way opened when pulling shelves out of the rail compartment.
- For easy access to the storage content, you must pull the shelves approximately 1/3 of its depth out of the rail compartment, however, this appliance are designed with a notch on each side of the shelf tracks to prevent bottles from falling.



➤ Reversing the Door Swing of Your Appliance

This appliance has the capability of the door opening from either the left or right side. The unit is delivered to you with the door opening from the left side. Should you desire to reverse the opening direction, please follow these instructions.

For TSC BELLONA 38(D)



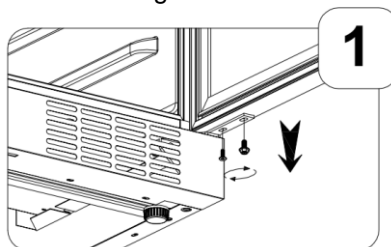
- | | | |
|---------------------|---------------|----------------------|
| ① Rubber cover | ② Screw | ③ Decorative cover |
| ④ Screw | ⑤ Upper Hinge | ⑥ Door |
| ⑦ Lower hinge | ⑧ Screw | ⑨ Leveling leg-short |
| ⑩ Leveling leg-High | | |

1. Remove the rubber cover. Remove the 2pcs bolts with cross-screwdriver. Then, take off the decorative cover. (See Fig. 1)
2. Loose the bolts with cross-screwdriver and remove the upper hinge, pull up to remove the door. (Note: Please support the door when remove the door to avoid any damage or injure caused due to the door fall down. (See Fig. 2)
3. Loose the bolt with cross-screwdriver and take off the right lower hinge. Remove the short leveling leg then keep it carefully for standby. Remove the leveling leg on the left side, install it into the same position on the right side. (see Fig. 3)
4. Install the left lower hinge supporter from the plastic bag that includes the instruction manual. Install the door on the left lower hinge, lock the upper hinge, and fit on decorative cover and rubber cover.

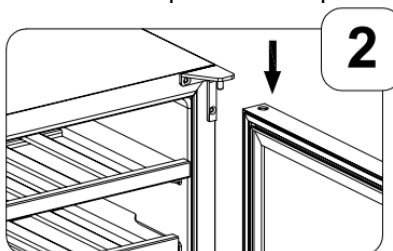
For TSC BELLONA 45 / TSC BELLONA 110 / TSC BELLONA 166

Note: All parts removed must be saved to do the reinstatement of door.

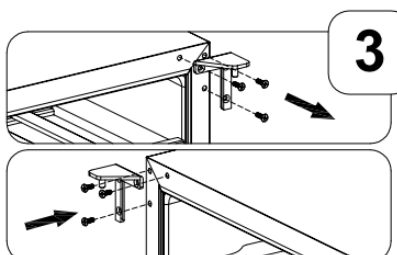
1. Open the glass door and remove the two screws under the right bottom corner of the glass door that are used to hold the right lower hinge to the glass door. Be careful to hold the glass door with hands from dropping after removing the screws.



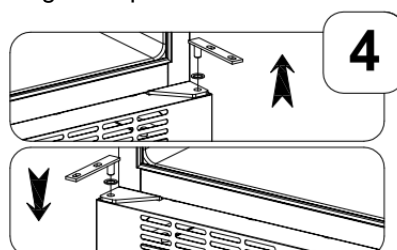
2. Pull down to remove the glass door and place it on a padded surface to prevent scratching it.



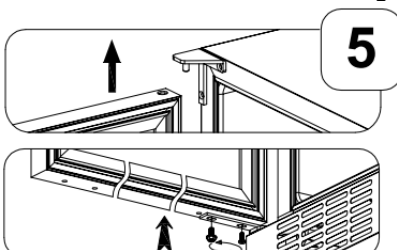
3. Remove the door shaft from the right upper hinge then install and tighten it in the left upper hinge.



4. Remove the right lower hinge supporter with the adjusting washer. Install the left lower hinge supporter from the plastic bag that includes the instruction manual. Make sure to put the adjusting washers at the designated position.

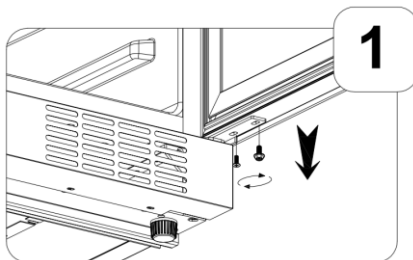


5. Locate the glass door to the designated position making sure that the door shaft enters the door hole at the left upper corner of the glass door. Install the two screws that are used to connect the left lower hinge with the glass door and tighten them before the door is leveled. Then remove the handle from the left side and install it on the right side of the glass door.

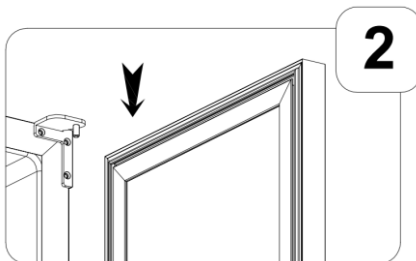


For TSC BELLONA 45 (SS)

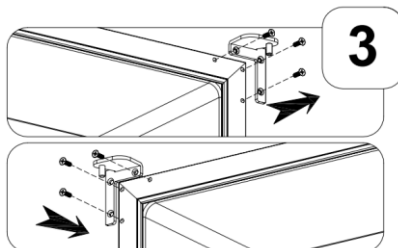
1. Open the glass door and remove the two screws under the right bottom corner of the glass door that are used to hold the right lower hinge to the glass door. Be careful to hold the glass door with hands from dropping after removing the screws.



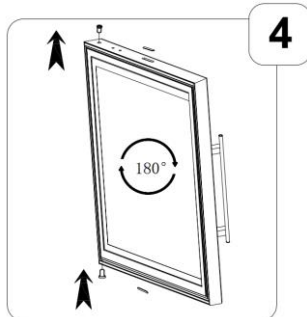
2. Pull down to remove the glass door and place it on a padded surface to prevent scratching it.



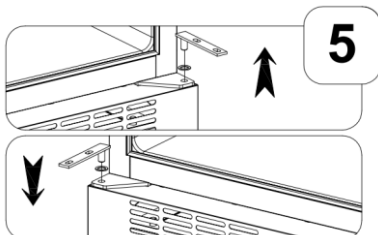
3. Remove the screws from the upper right hinge. Place the upper right hinge in a safe place in case you need to reverse the door in the future. Remove the plastic caps from the upper left hinge corner. Install the upper left hinge by fastening the screws through the left hinge to the cabinet. Insert the plastic caps to the upper right hinge.



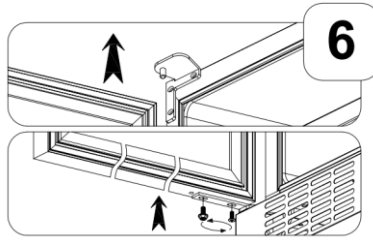
4. The door revolves 180 degrees. Unscrew 2 screws at the bottom of the door and remove the Reed Switch, then install the Reed Switch at the top of the door frame.



5. Remove the door axis and bushing from the lower right hinge. Install the door axis and busing on the lower left hinge.

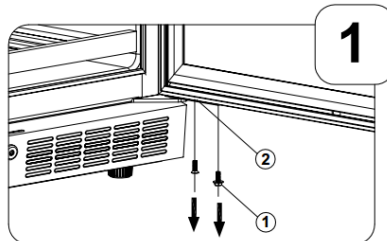


- Carefully insert the door into the upper left hinge. Slide the door on top of the lower hinge and secure the door by installing the lower screws.

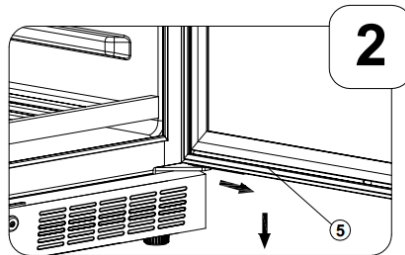


For TSC BELLONA 166 (SS)

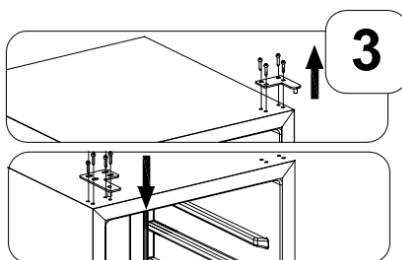
- Open the glass door and remove the two screws under the right bottom corner of the glass door that are used to hold the right lower hinge to the glass door. Be careful to hold the glass door with hands from dropping after removing the screws.



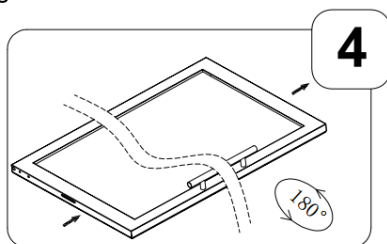
- Pull down to remove the glass door and place it on a padded surface to prevent scratching it.



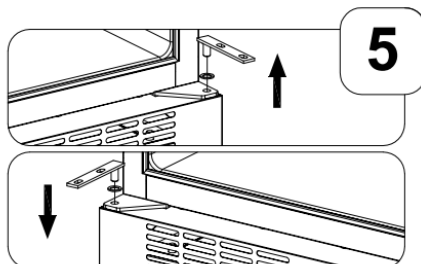
- Remove the screws from the upper right hinge. Place the upper right hinge in a safe place in case you need to reverse the door in the future. Remove the plastic caps from the upper left hinge corner. Install the upper left hinge by fastening the screws through the left hinge to the cabinet. Insert the plastic caps to the upper right hinge.



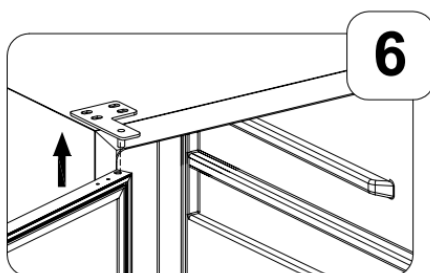
4. The door revolves 180 degrees.



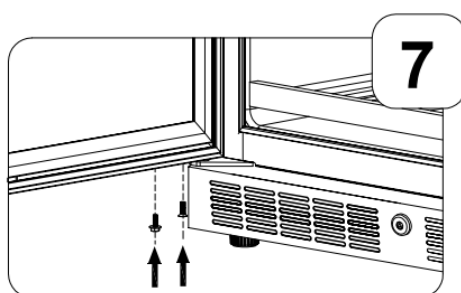
5. Remove the door axis and bushing from the lower right hinge. Install the door axis and bushing on the lower left hinge.



6. Carefully insert the door into the upper left hinge



7. Slide the door on top of the lower hinge and secure the door by installing the lower screws.



CARE & MAINTENANCE

➤ **Cleaning your wine chiller**

- Turn off the power, unplug the appliance, and remove all items including shelves and rack.
- Wash inside surfaces with a warm water and mild solution.
- Wash the shelves with a mild detergent solution.
- Wring excess water out of the sponge or cloth when cleaning area of the controls, or any electrical parts.
- Wash the outside appliance with warm water and mild liquid detergent. Rinse well and wipe dry with a clean soft cloth.

➤ **Power failure**

- Most power failures are corrected within a short period of time. An hour or two's loss of power will not affect your wine chiller's temperatures. To avoid sudden change of temperature while the power is off, you should avoid opening the door. For longer period of power failure, do take steps to protect your wine.

➤ **Vacation Time**

- Short vacations: Leave the wine chiller operating during vacations of less than three weeks.
- If the appliance will not be used for several months, remove all items and turn off the appliance. Clean and dry the interior thoroughly. To prevent odor and mold growth, leave the door open slightly: blocking it open if necessary.

➤ **Moving your wine chiller**

- Remove all items from the wine chiller.
- Take out the shelves, or securely tape the shelves inside wine chiller.
- Turn the levelling legs up to the base to avoid damage.
- Seal the glass door with tape.
- Ensure the appliance stays secure in the upright position during transportation. Also protect outside of appliance with a blanket or similar items.

➤ **Energy saving tips**

- The wine chiller should be located in the coolest area of the room, away from producing appliances, and out of the direct sunlight.

COMMON PROBLEMS WITH YOUR WINE CHILLER

Common problems may easily be solved, saving you the cost of a possible service call. Please read carefully the instruction manual and revert to troubleshooting guide chart.

Troubleshooting Guide Chart

| Problem | Possible Cause |
|----------------------------------|--|
| Wine chiller does not operate | No plugged in. The appliance is turned off. The circuit breaker tripped or a blown fuse. |
| Wine chiller is not cold enough | Check the temperature control setting. External environment may require a higher setting. The door is opened too often. The door is not closed completely. The door gasket does not seal properly. |
| Turns on and off frequently | The room temperature is hotter than normal. Overload of the cabinet The door is opened too often. The door is not closed completely. The temperature control is not set correctly. The door gasket does not seal properly. |
| The light does not work | Not plugged in. The circuit breaker tripped or a blown fuse. The bulb has burned out. The light button is "OFF" |
| Vibrations | Check to assure that the wine chiller is level. |
| Too much noise | The rattling noise may come form the flow of the refrigerant, which is normal. As each cycle ends, you may hear gurgling sounds. Contraction and expansion of the inside walls may cause popping and crackling noises. The wine chiller is not level. |
| The door will not close properly | The wine chiller is not level. The door was reversed and not properly installed. The gasket is dirty/faulty. The shelves are out of position. |